

Contrepoint Double



Contrepoint Double à l'octave

This handwritten musical score is titled "Contrepoint Double à l'octave" and is written on five systems of staves. Each system consists of two staves: the upper staff is for the right hand (RH) and the lower staff is for the left hand (LD). The music is written in a single melodic line on each staff, with notes often beamed together in groups of four or six, suggesting a rhythmic pattern of eighth or sixteenth notes. The key signature and time signature vary between systems: the first system is in B-flat major (two flats) and common time; the second system is in B major (two sharps); the third system is in B major; the fourth system is in B major; and the fifth system is in B major. The notation includes various note values, rests, and phrasing slurs. The handwriting is in dark ink on aged, slightly yellowed paper.

Handwritten musical notation for the first system. It consists of two staves. The top staff is a treble clef with a key signature of one sharp (F#) and a common time signature (C). The bottom staff is a bass clef with the same key signature and time signature. The music features a melody in the treble and a bass line in the bass. The system concludes with a double bar line and a wavy line indicating the end of the phrase.

Handwritten musical notation for the second system, continuing the piece. It follows the same two-staff format (treble and bass clefs) with a key signature of one sharp and common time. The notation includes various rhythmic values and rests, ending with a double bar line and a wavy line.

Handwritten musical notation for the third system. The key signature changes to two flats (Bb, Eb) and the time signature remains common time. The two-staff format is maintained, with a melodic line in the treble and a bass line in the bass. The system ends with a double bar line and a wavy line.

Handwritten musical notation for the fourth system, continuing in the key of two flats and common time. The two-staff format is used, showing a continuation of the melodic and bass lines. The system concludes with a double bar line and a wavy line.

Handwritten musical notation for the fifth system. The key signature changes back to one sharp (F#) and common time. The two-staff format is used, with a melodic line in the treble and a bass line in the bass. The system ends with a double bar line and a wavy line.

Handwritten musical notation for the sixth and final system on the page. It continues in the key of one sharp and common time. The two-staff format is used, with a melodic line in the treble and a bass line in the bass. The system concludes with a double bar line and a wavy line.

Handwritten musical notation, first system. Treble clef, key signature of one sharp (F#), and common time signature (C). The melody consists of eighth and quarter notes. The bass line consists of whole notes. A double bar line is present at the end of the system.

Handwritten musical notation, second system. Treble clef, key signature of one sharp (F#), and common time signature (C). The melody consists of whole notes. The bass line consists of eighth and quarter notes. A double bar line is present at the end of the system.

Handwritten musical notation, third system. Treble clef, key signature of one sharp (F#), and common time signature (C). The melody consists of eighth and quarter notes. The bass line consists of whole notes. A double bar line is present at the end of the system.

Handwritten musical notation, fourth system. Treble clef, key signature of one sharp (F#), and common time signature (C). The melody consists of whole notes. The bass line consists of eighth and quarter notes. A double bar line is present at the end of the system.

Handwritten musical notation, fifth system. Treble clef, key signature of two flats (Bb, Eb), and common time signature (C). The melody consists of eighth and quarter notes. The bass line consists of whole notes. A double bar line is present at the end of the system.

Handwritten musical notation, sixth system. Treble clef, key signature of two flats (Bb, Eb), and common time signature (C). The melody consists of whole notes. The bass line consists of eighth and quarter notes. A double bar line is present at the end of the system.



Handwritten musical notation on two staves. The upper staff is in treble clef with a key signature of one sharp (F#) and a 4/4 time signature. It contains a melodic line with eighth and quarter notes. The lower staff is in bass clef with the same key signature and time signature, containing a bass line with whole notes.

Handwritten musical notation on two staves. The upper staff is in treble clef with a key signature of one sharp (F#) and a 4/4 time signature. It contains a melodic line with eighth and quarter notes. The lower staff is in bass clef with the same key signature and time signature, containing a bass line with whole notes.

Handwritten musical notation on two staves. The upper staff is in treble clef with a key signature of two sharps (F#, C#) and a 4/4 time signature. It contains a melodic line with eighth and quarter notes. The lower staff is in bass clef with the same key signature and time signature, containing a bass line with whole notes.

Handwritten musical notation on two staves. The upper staff is in treble clef with a key signature of two sharps (F#, C#) and a 4/4 time signature. It contains a melodic line with eighth and quarter notes. The lower staff is in bass clef with the same key signature and time signature, containing a bass line with whole notes.

Handwritten musical notation on two staves. The upper staff is in treble clef with a key signature of one sharp (F#) and a 4/4 time signature. It contains a melodic line with eighth and quarter notes. The lower staff is in bass clef with the same key signature and time signature, containing a bass line with whole notes.

Handwritten musical notation on two staves. The upper staff is in treble clef with a key signature of one sharp (F#) and a 4/4 time signature. It contains a melodic line with eighth and quarter notes. The lower staff is in bass clef with the same key signature and time signature, containing a bass line with whole notes.

Handwritten musical notation on two staves. The upper staff is in treble clef with a key signature of one sharp (F#) and a 4/4 time signature. It contains a melodic line with eighth and quarter notes. The lower staff is in bass clef with the same key signature and time signature, containing a bass line with whole notes.

Handwritten musical notation on a five-line staff. The top staff contains a melody with notes and rests. The bottom staff contains a bass line with notes and rests. The key signature has one sharp (F#) and the time signature is 4/4. The notation includes various note values and rests.

Handwritten musical notation on a five-line staff. The top staff contains a melody with notes and rests. The bottom staff contains a bass line with notes and rests. The key signature has two sharps (F# and C#) and the time signature is 4/4. The notation includes various note values and rests.

Handwritten musical notation on a five-line staff. The top staff contains a melody with notes and rests. The bottom staff contains a bass line with notes and rests. The key signature has two sharps (F# and C#) and the time signature is 4/4. The notation includes various note values and rests.

Handwritten musical notation on a five-line staff. The top staff contains a melody with notes and rests. The bottom staff contains a bass line with notes and rests. The key signature has two sharps (F# and C#) and the time signature is 4/4. The notation includes various note values and rests.

Handwritten musical notation on a five-line staff. The top staff contains a melody with notes and rests. The bottom staff contains a bass line with notes and rests. The key signature has two flats (Bb and Eb) and the time signature is 4/4. The notation includes various note values and rests.

Handwritten musical notation on a five-line staff. The top staff contains a melody with notes and rests. The bottom staff contains a bass line with notes and rests. The key signature has two flats (Bb and Eb) and the time signature is 4/4. The notation includes various note values and rests.

Contrepoint Double à la neuvième

Handwritten musical notation for the first system, consisting of two staves. The top staff is in treble clef with a key signature of one sharp (F#) and a 4/2 time signature. The bottom staff is in bass clef with the same key signature and time signature. The music features a series of eighth notes in the upper voice and a corresponding bass line, with a fermata at the end of the system.

Handwritten musical notation for the second system, consisting of two staves. The top staff is in treble clef with a key signature of one sharp (F#) and a 4/2 time signature. The bottom staff is in bass clef with the same key signature and time signature. The music continues with eighth notes and rests, ending with a fermata.

Handwritten musical notation for the third system, consisting of two staves. The top staff is in treble clef with a key signature of one sharp (F#) and a 4/2 time signature. The bottom staff is in bass clef with the same key signature and time signature. The music continues with eighth notes and rests, ending with a fermata.

Handwritten musical notation for the fourth system, consisting of two staves. The top staff is in treble clef with a key signature of one sharp (F#) and a 4/2 time signature. The bottom staff is in bass clef with the same key signature and time signature. The music continues with eighth notes and rests, ending with a fermata.

Handwritten musical notation for the fifth system, consisting of two staves. The top staff is in treble clef with a key signature of one sharp (F#) and a 4/2 time signature. The bottom staff is in bass clef with the same key signature and time signature. The music continues with eighth notes and rests, ending with a fermata.

Handwritten musical notation on a grand staff. The upper staff is in treble clef and the lower staff is in bass clef. The key signature is one sharp (F#) and the time signature is 4/4. The music consists of several measures with various note values and rests.

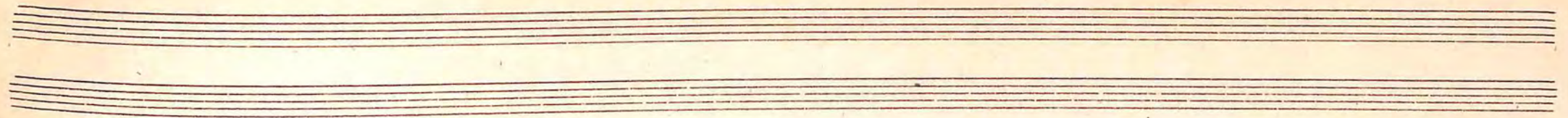
Handwritten musical notation on a grand staff, labeled "1. R." on the left. The notation continues with similar rhythmic patterns and note values as the first system.

Handwritten musical notation on a grand staff, labeled "2. R." on the left. The notation continues with similar rhythmic patterns and note values as the first system.

Handwritten musical notation on a grand staff, labeled "3. R." on the left. The notation continues with similar rhythmic patterns and note values as the first system.

Handwritten musical notation on a grand staff, labeled "4. R." on the left. The notation continues with similar rhythmic patterns and note values as the first system.

Four empty grand staves at the bottom of the page, indicating that the musical piece has concluded.



Handwritten musical notation on two staves. The top staff is in treble clef with a key signature of one sharp (F#). The bottom staff is in bass clef with a key signature of one sharp (F#). The music consists of several measures with notes, rests, and slurs. A handwritten note in red ink is written below the bottom staff: *roule trop sur le triton*.

Handwritten musical notation on two staves. The top staff is in treble clef with a key signature of one sharp (F#). The bottom staff is in bass clef with a key signature of one sharp (F#). The music consists of several measures with notes, rests, and slurs. A bracket on the left side of the top staff is labeled with the number 13.

Handwritten musical notation on two staves. The top staff is in treble clef with a key signature of one sharp (F#). The bottom staff is in bass clef with a key signature of one sharp (F#). The music consists of several measures with notes, rests, and slurs. A bracket on the left side of the top staff is labeled with the number 27.

Handwritten musical notation on two staves. The top staff is in treble clef with a key signature of one sharp (F#). The bottom staff is in bass clef with a key signature of one sharp (F#). The music consists of several measures with notes, rests, and slurs. A bracket on the left side of the top staff is labeled with the number 33.

Handwritten musical notation on two staves. The top staff is in treble clef with a key signature of one sharp (F#). The bottom staff is in bass clef with a key signature of one sharp (F#). The music consists of several measures with notes, rests, and slurs. A bracket on the left side of the top staff is labeled with the number 41.



Contrepoint Double à la Dixième

1^{re} R

2^{de} R

3^e R

4^e R

5^e R

Handwritten musical notation on a grand staff. The upper staff contains a melody with quarter and eighth notes, and the lower staff contains a bass line with whole notes. The key signature is one sharp (F#) and the time signature is 6/8. The piece concludes with a double bar line and a wavy line.

Handwritten musical notation on a grand staff, labeled "1st R". The upper staff contains a melody with quarter and eighth notes, and the lower staff contains a bass line with whole notes. The key signature is one sharp (F#) and the time signature is 6/8. The piece concludes with a double bar line and a wavy line.

Handwritten musical notation on a grand staff, labeled "2nd R". The upper staff contains a melody with quarter and eighth notes, and the lower staff contains a bass line with whole notes. The key signature is one sharp (F#) and the time signature is 6/8. The piece concludes with a double bar line and a wavy line.

Handwritten musical notation on a grand staff, labeled "3rd R". The upper staff contains a melody with quarter and eighth notes, and the lower staff contains a bass line with whole notes. The key signature is one sharp (F#) and the time signature is 6/8. The piece concludes with a double bar line and a wavy line.

Handwritten musical notation on a grand staff, labeled "4th R". The upper staff contains a melody with quarter and eighth notes, and the lower staff contains a bass line with whole notes. The key signature is one sharp (F#) and the time signature is 6/8. The piece concludes with a double bar line and a wavy line.

Handwritten musical notation on two staves. The top staff begins with a treble clef and a key signature of three sharps (F#, C#, G#). The bottom staff begins with a bass clef and the same key signature. The music consists of a series of notes and rests across eight measures, ending with a double bar line and a wavy line indicating a repeat or continuation.

Handwritten musical notation on two staves. The top staff begins with a treble clef and a key signature of three sharps. The bottom staff begins with a bass clef and the same key signature. The music consists of a series of notes and rests across eight measures, ending with a double bar line and a wavy line.

Handwritten musical notation on two staves. The top staff begins with a treble clef and a key signature of three sharps. The bottom staff begins with a bass clef and the same key signature. The music consists of a series of notes and rests across eight measures, ending with a double bar line and a wavy line.

Handwritten musical notation on two staves. The top staff begins with a treble clef and a key signature of three sharps. The bottom staff begins with a bass clef and the same key signature. The music consists of a series of notes and rests across eight measures, ending with a double bar line and a wavy line.

Handwritten musical notation on two staves. The top staff begins with a treble clef and a key signature of three sharps. The bottom staff begins with a bass clef and the same key signature. The music consists of a series of notes and rests across eight measures, ending with a double bar line and a wavy line.

Handwritten musical notation on two staves. The top staff begins with a treble clef and a key signature of two sharps (F# and C#). The bottom staff begins with a bass clef and the same key signature. The music consists of several measures of notes, including quarter and eighth notes, with some rests. A double bar line is present at the end of the first system, followed by a wavy line indicating a section break.

Handwritten musical notation on two staves, labeled "1^o R" on the left. The top staff has a treble clef and a key signature of two sharps. The bottom staff has a bass clef and a key signature of two sharps. The notation includes various note values and rests. A double bar line and a wavy line are at the end of the system.

Handwritten musical notation on two staves, labeled "2^a R" on the left. The top staff has a treble clef and a key signature of two sharps. The bottom staff has a bass clef and a key signature of two sharps. The notation includes various note values and rests. A double bar line and a wavy line are at the end of the system.

Handwritten musical notation on two staves, labeled "3^a R" on the left. The top staff has a treble clef and a key signature of three sharps (F#, C#, G#). The bottom staff has a bass clef and a key signature of three sharps. The notation includes various note values and rests. A double bar line and a wavy line are at the end of the system.

Handwritten musical notation on two staves, labeled "4^a R" on the left. The top staff has a treble clef and a key signature of two sharps. The bottom staff has a bass clef and a key signature of two sharps. The notation includes various note values and rests. A double bar line and a wavy line are at the end of the system.

Four empty musical staves at the bottom of the page, with no notation.

Handwritten musical notation on two staves. The top staff begins with a treble clef and a key signature of one flat (B-flat). The bottom staff begins with a bass clef and a key signature of one flat. The music consists of several measures of notes and rests, ending with a double bar line and a wavy line.

Handwritten musical notation on two staves, labeled "1 R". The top staff begins with a treble clef and a key signature of one flat. The bottom staff begins with a bass clef and a key signature of one flat. The music consists of several measures of notes and rests, ending with a double bar line and a wavy line.

Handwritten musical notation on two staves, labeled "2 R". The top staff begins with a treble clef and a key signature of one flat. The bottom staff begins with a bass clef and a key signature of one flat. The music consists of several measures of notes and rests, ending with a double bar line and a wavy line.

Handwritten musical notation on two staves, labeled "3 R". The top staff begins with a treble clef and a key signature of two sharps (D major). The bottom staff begins with a bass clef and a key signature of two sharps. The music consists of several measures of notes and rests, ending with a double bar line and a wavy line.

Handwritten musical notation on two staves, labeled "4 R". The top staff begins with a treble clef and a key signature of three sharps (F# major). The bottom staff begins with a bass clef and a key signature of three sharps. The music consists of several measures of notes and rests, ending with a double bar line and a wavy line.

Handwritten musical notation on a grand staff (treble and bass clefs). The key signature is two sharps (F# and C#). The notation includes various note values, rests, and a double bar line with a wavy line indicating the end of a section.

Handwritten musical notation on a grand staff. The key signature is two sharps. The notation includes various note values, rests, and a double bar line with a wavy line.

Handwritten musical notation on a grand staff. The key signature is two sharps. The notation includes various note values, rests, and a double bar line with a wavy line.

Handwritten musical notation on a grand staff. The key signature is two sharps. The notation includes various note values, rests, and a double bar line with a wavy line.

Handwritten musical notation on a grand staff. The key signature is two sharps. The notation includes various note values, rests, and a double bar line with a wavy line.

Handwritten musical notation on a grand staff. The key signature is two sharps. The notation includes various note values, rests, and a double bar line with a wavy line.

Contrepoint Double à la Douzième

Handwritten musical notation for the first system. It consists of three staves. The top staff is a treble clef with a key signature of one flat (Bb) and contains a melodic line with eighth and sixteenth notes. The middle staff is a soprano clef with a key signature of one flat (Bb) and contains a bass line with whole notes. The bottom staff is an alto clef with a key signature of one flat (Bb) and contains a bass line with eighth and sixteenth notes. The system concludes with a double bar line and a wavy line indicating the end of the phrase.

Handwritten musical notation for the second system. It consists of three staves. The top staff is a treble clef with a key signature of two sharps (D major) and contains a melodic line with eighth and sixteenth notes. The middle staff is a soprano clef with a key signature of two sharps (D major) and contains a bass line with whole notes. The bottom staff is an alto clef with a key signature of two sharps (D major) and contains a bass line with eighth and sixteenth notes. The system concludes with a double bar line and a wavy line indicating the end of the phrase.

Handwritten musical notation for the third system. It consists of three staves. The top staff is a treble clef with a key signature of three flats (E-flat major) and contains a melodic line with eighth and sixteenth notes. The middle staff is a soprano clef with a key signature of three flats (E-flat major) and contains a bass line with whole notes. The bottom staff is an alto clef with a key signature of three flats (E-flat major) and contains a bass line with eighth and sixteenth notes. The system concludes with a double bar line and a wavy line indicating the end of the phrase.

Handwritten musical notation on three staves. The top staff is in treble clef with a key signature of one sharp (F#) and a common time signature (C). The middle staff is in alto clef with the same key signature and time signature. The bottom staff is in bass clef with the same key signature and time signature. The notation includes various note values, rests, and bar lines. The piece concludes with a double bar line and a wavy line indicating the end.

Handwritten musical notation on three staves. The top staff is in treble clef with a key signature of two sharps (F#, C#) and a common time signature (C). The middle staff is in alto clef with the same key signature and time signature. The bottom staff is in bass clef with the same key signature and time signature. The notation includes various note values, rests, and bar lines. The piece concludes with a double bar line and a wavy line indicating the end.

Handwritten musical notation on three staves. The top staff is in treble clef with a key signature of one sharp (F#) and a common time signature (C). The middle staff is in alto clef with the same key signature and time signature. The bottom staff is in bass clef with the same key signature and time signature. The notation includes various note values, rests, and bar lines. The piece concludes with a double bar line and a wavy line indicating the end.

Handwritten musical notation on three staves. The top staff is in treble clef with a key signature of three sharps (F#, C#, G#) and a common time signature (C). The middle staff is in alto clef with the same key signature and time signature. The bottom staff is in bass clef with the same key signature and time signature. The notation includes various note values, rests, and bar lines. The piece concludes with a double bar line and a wavy line indicating the end.

Contrepoint double à la onzième

The first system of handwritten musical notation consists of three staves. The top staff begins with a treble clef and a key signature of one flat (B-flat). It contains a series of notes, including quarter and eighth notes, with some slurs. The middle staff starts with a common time signature 'C' and a key signature of one flat, containing notes and rests. The bottom staff begins with a bass clef and a key signature of one flat, also containing notes and rests. The system concludes with a double bar line and a wavy line indicating the end of the phrase.

The second system of handwritten musical notation consists of three staves. The top staff begins with a treble clef and a key signature of two sharps (F# and C#). It contains a series of notes, including quarter and eighth notes, with some slurs. The middle staff starts with a common time signature 'C' and a key signature of two sharps, containing notes and rests. The bottom staff begins with a bass clef and a key signature of two sharps, also containing notes and rests. The system concludes with a double bar line and a wavy line indicating the end of the phrase.

Contrepoint Double à la Treizieme

Handwritten musical notation for the first system, consisting of three staves. The top staff is in treble clef with a key signature of one sharp (F#) and a common time signature (C). The middle staff is in alto clef with a key signature of one sharp (F#) and a common time signature (C). The bottom staff is in bass clef with a key signature of one sharp (F#) and a common time signature (C). The music features various rhythmic values and melodic lines across the three parts.

Handwritten musical notation for the second system, consisting of three staves. The top staff is in treble clef with a key signature of one flat (Bb) and a common time signature (C). The middle staff is in alto clef with a key signature of one flat (Bb) and a common time signature (C). The bottom staff is in bass clef with a key signature of one flat (Bb) and a common time signature (C). The music continues with various rhythmic and melodic patterns.

Contrepoint Double à la quatorzième

The first system of the handwritten musical score consists of three staves. The top staff is in treble clef with a key signature of two sharps (F# and C#). The middle staff is in alto clef with a key signature of two sharps. The bottom staff is in bass clef with a key signature of two sharps. The music is written in a style characteristic of 17th-century French lute tablature, using rhythmic values (minims, crotchets, quavers) and accidentals (sharps, naturals) to represent pitches. The notation includes various rhythmic patterns and phrasing marks such as slurs and accents. The system concludes with a double bar line and a decorative flourish.

The second system of the handwritten musical score consists of three staves. The top staff is in treble clef with a key signature of one flat (F). The middle staff is in alto clef with a key signature of one flat. The bottom staff is in bass clef with a key signature of one flat. The notation continues with rhythmic values and accidentals, maintaining the style of the first system. It features similar phrasing and concludes with a double bar line and a decorative flourish.