

- Paysage Grec - lentement

- " " - Très lent - " la mer étale au loin - -

Danse grecque

- Andante -

- Inséré n° 6 de "divertissement de ballet" → édité chez Nouvoisin

Paysage grec.

Lentement

Handwritten musical score for 'Paysage grec'. The score is written on a grand staff with three systems. The first system includes a treble clef, a key signature of one flat (B-flat), and a 3/4 time signature. The tempo is marked 'Lentement'. The first system features a melody in the treble clef with a dynamic marking of *p* and a *pp* marking in the bass clef. The second system includes a *arpégé* marking. The third system includes a *ce 2^e* marking. The score consists of a treble clef staff and a grand staff (two bass clef staves). The music is written in a style characteristic of late 19th or early 20th-century manuscript notation.

Handwritten musical score for the first system. It consists of a treble clef staff with a melodic line and a grand staff (treble and bass clefs) with piano accompaniment. The key signature has one flat and the time signature is 3/4. The piano part includes chord symbols like F, Bb, and Eb.

Calme

Handwritten musical score for the second system, marked "Calme". It features a treble clef staff with a melodic line and a grand staff with piano accompaniment. The piano part includes chord symbols like F# and B.

Sans peur

Handwritten musical score for the third system, marked "Sans peur". It features a treble clef staff with a melodic line and a grand staff with piano accompaniment. The piano part includes chord symbols like F and B.

z all

Handwritten musical score for the fourth system, marked "z all". It features a treble clef staff with a melodic line and a grand staff with piano accompaniment. The piano part includes chord symbols like F and B.

Handwritten musical notation for the first system. The top staff is a treble clef with a melodic line. The bottom two staves are a grand staff with piano accompaniment. The music is in a key with one sharp (F#) and a common time signature. The first measure shows a treble clef with a melodic line starting on a whole note. The piano accompaniment consists of chords in the right hand and single notes in the left hand.

Handwritten musical notation for the second system. The top staff continues the melodic line with eighth notes and slurs. The piano accompaniment features chords in the right hand and single notes in the left hand. The key signature remains one sharp (F#).

Handwritten musical notation for the third system. The top staff continues the melodic line with eighth notes and slurs. The piano accompaniment features chords in the right hand and single notes in the left hand. The key signature remains one sharp (F#).

Handwritten musical notation for the fourth system. The top staff concludes the melodic line with a flourish. The piano accompaniment features chords in the right hand and single notes in the left hand. The key signature remains one sharp (F#).

Handwritten musical score, first system. It consists of three staves. The top staff has a treble clef and a key signature of one flat (Bb). The middle and bottom staves have a grand staff clef (treble and bass clefs). The music includes various notes, rests, and dynamic markings. A handwritten "p" (piano) is visible in the first measure of the top staff.

Handwritten musical score, second system. It consists of three staves. The top staff has a treble clef and a key signature of one flat (Bb). The middle and bottom staves have a grand staff clef. The music includes various notes, rests, and dynamic markings. A handwritten "Lentement" (Lento) is written above the first measure of the top staff.

Handwritten musical score, third system. It consists of three staves. The top staff has a treble clef and a key signature of one flat (Bb). The middle and bottom staves have a grand staff clef. The music includes various notes, rests, and dynamic markings. A handwritten "rall" (rallentando) is written above the first measure of the top staff. A handwritten "pp" (pianissimo) is visible in the first measure of the bottom staff.

Four empty musical staves at the bottom of the page, consisting of two grand staves (treble and bass clefs) and two single staves.

Très lent — la mer étale au loin sa nonchalance heureuse

Handwritten musical notation for the first system. It consists of two staves: a treble clef staff and a bass clef staff. The time signature is 3/4. The music begins with a piano (p) dynamic marking. The melody in the treble clef is composed of quarter notes and rests, while the bass clef provides a harmonic accompaniment with chords and single notes. A fermata is placed over the final notes of both staves.

Sur un ciel clair et pur, noyé d'apaisement, Et toute la splendeur de la Grâce amoureuse

Handwritten musical notation for the second system. It features a treble clef staff with a melodic line consisting of quarter notes and rests, and a bass clef staff with accompaniment. A fermata is placed over the first few notes of the treble staff.

Emplit l'immensité de son rayonnement — le vent, comme un baiser, glisse au long des portiques

Handwritten musical notation for the third system. It consists of two staves: a treble clef staff with a melodic line and a bass clef staff with accompaniment. A fermata is placed over the final notes of the treble staff.

Contournant la blancheur des marbres éternels, Fouillant les chapiteaux des colonnes antiques

Handwritten musical notation for the fourth system. It features a treble clef staff with a melodic line and a bass clef staff with accompaniment. A fermata is placed over the first few notes of the treble staff.

Et mourant au fronton des Temples solennels. — Rien que la pierre et l'eau, la

Handwritten musical notation for the first system, featuring two staves with notes and rests.

lumière et les vagues! des rocs baignés d'azur dorment comme des Dieux.

Handwritten musical notation for the second system, featuring two staves with notes and rests.

Et les flots au soleil plus brillants que des dagues, Frappent rythmiquement le

Handwritten musical notation for the third system, featuring two staves with notes and rests.

Sable lumineux. — C'est la sérénité des êtres et des choses, l'esthétique

Handwritten musical notation for the fourth system, featuring two staves with notes and rests.

verdure des corps souples et nus, C'est la brise d'amour gonflant les peplums roses

Handwritten musical notation for the fifth system, featuring two staves with notes and rests.

Ce sont les bais sacrés aux parfums inconnus — C'est la vie extatique



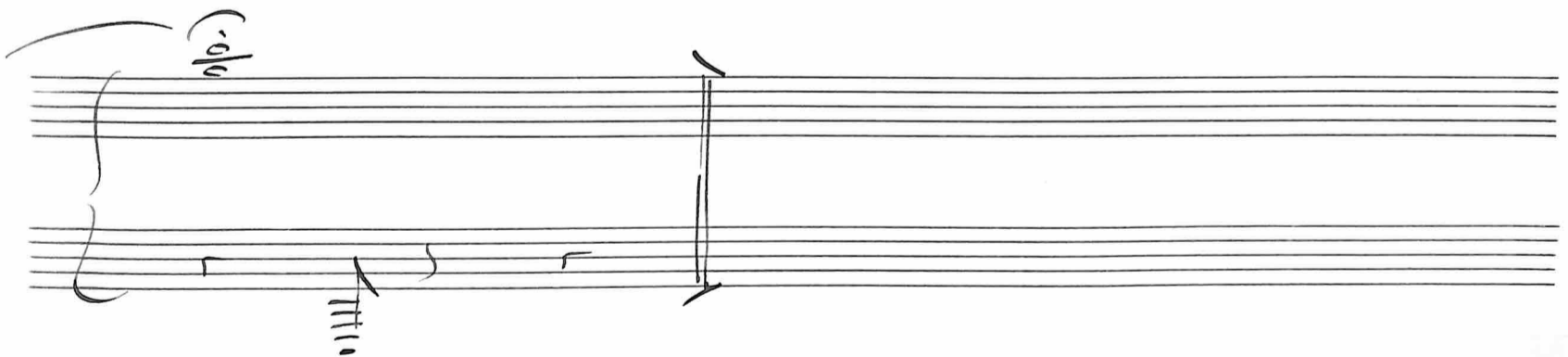
et changée en poème, Le pareux bonheur d'adorer la clarté, En



regardant la mer où passe une Flizème Dont notre rêve suit



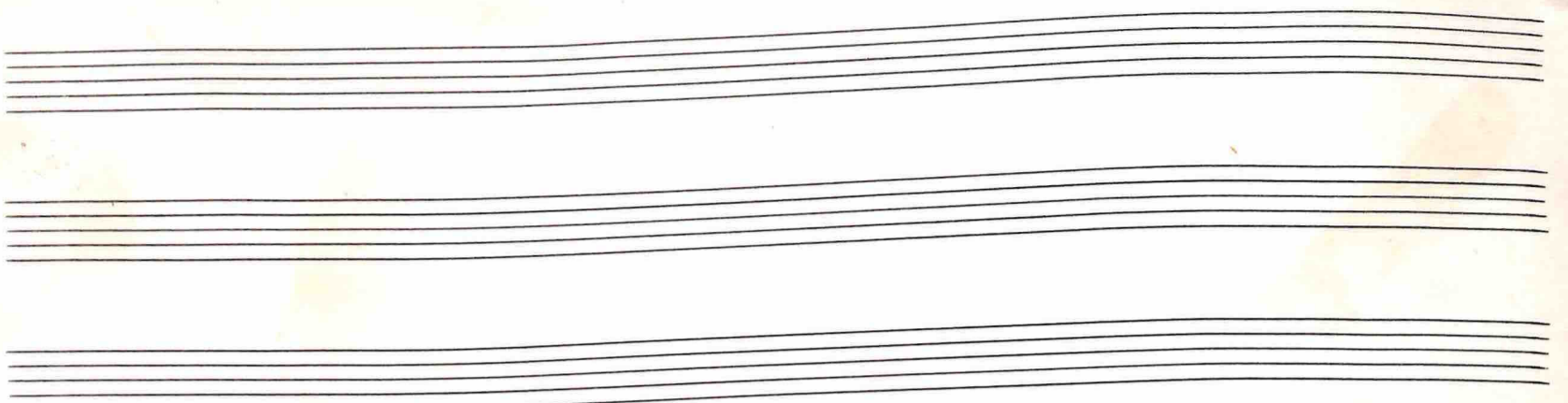
le sillage argenté! — — —



Danse Grecque

par Mme Desmarais

Ne pas oublier de continuer la musique
en attendant la danse —



Allegro

à deux

Grand Jupi - ter quand tu par lais Prenais-tu

f *mf* *p*

l'ac-cent Bor de - lais Pour venir fai-re sur la ter-re Des be-sogues pas ordi-

mai-res et pour cal mer Funon, ou-da Disais-tu je rentre sur

l'heure Le temps de fuire en sa de meure Un cy-gree à madame Lé-

(avec le policier)

Tous

- da o he o - he o he o he o - he o - he o he o he o

après le 3^e Couplet, passer à la Danse

hé

f
8 - - - - -
low
p

Danse

la may reprise du n° 7

Danse

CV

Andante

This is a handwritten musical score for piano, consisting of several systems of staves. The tempo is marked *Andante*. The score begins with a treble clef, a key signature of one flat (B-flat), and a common time signature (C). The first system includes a treble staff with a melodic line and a bass staff with a harmonic accompaniment. The second system continues the melodic line in the treble staff and the accompaniment in the bass staff. The third system shows a more complex melodic line with some slurs and ties. The fourth system features a dense melodic texture with many sixteenth notes. The fifth system includes a dynamic marking of *pp* (pianissimo) and a fermata over a note. The sixth system continues the melodic development. The seventh system shows a change in the bass line with some rests. The eighth system concludes with a final melodic phrase and a fermata. The score is written in ink on aged paper.

Plus vite

Handwritten musical notation for the first system. It consists of two staves. The top staff is in treble clef and the bottom staff is in bass clef. The key signature has two flats (B-flat and E-flat). The time signature is 2/7. The notation includes various note values, rests, and dynamic markings like 'p'.

Handwritten musical notation for the second system, continuing the piece with similar notation and dynamics.

Handwritten musical notation for the third system, showing more complex rhythmic patterns and dynamics.

Handwritten musical notation for the fourth system, featuring dense rhythmic passages and dynamic markings.

Handwritten musical notation for the fifth system, including a 'cresc' marking and various musical notations.

Handwritten musical notation for the sixth system, consisting of empty staves.

Handwritten musical notation for the first system, consisting of a treble staff and a bass staff. The treble staff contains several measures of music with notes and rests, some marked with a colon and a sharp sign. The bass staff contains notes and rests, with a dynamic marking of *mf* (mezzo-forte) written above the first measure. The system concludes with a double bar line.

Handwritten musical notation for the second system, consisting of a treble staff and a bass staff. The treble staff contains notes and rests, with a dynamic marking of *p* (piano) written above the second measure. The bass staff contains notes and rests. The system concludes with a double bar line.

Handwritten musical notation for the third system, consisting of a treble staff and a bass staff. The treble staff contains notes and rests, with a dynamic marking of *p* (piano) written above the second measure. The bass staff contains notes and rests. The system concludes with a double bar line.

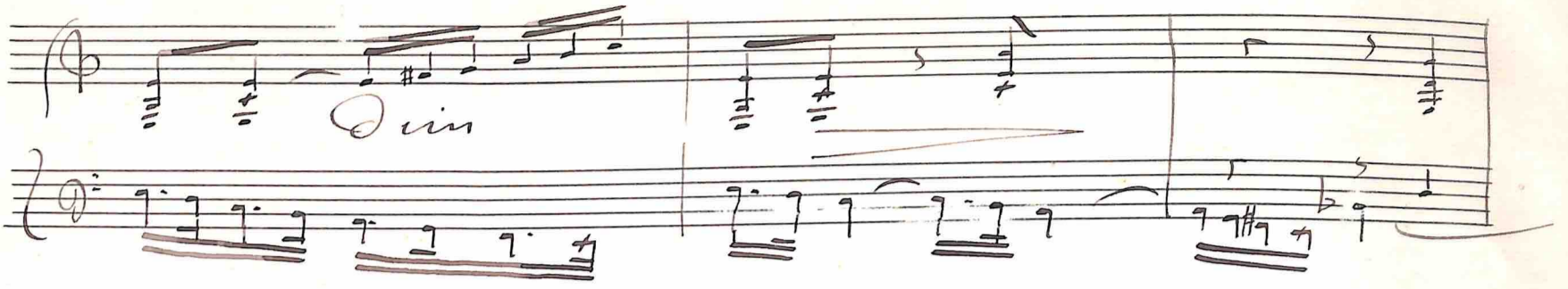
un peu retenu

Handwritten musical notation for the fourth system, consisting of a treble staff and a bass staff. The treble staff contains notes and rests, with a dynamic marking of *ff* (fortissimo) written above the second measure. The bass staff contains notes and rests. The system concludes with a double bar line.

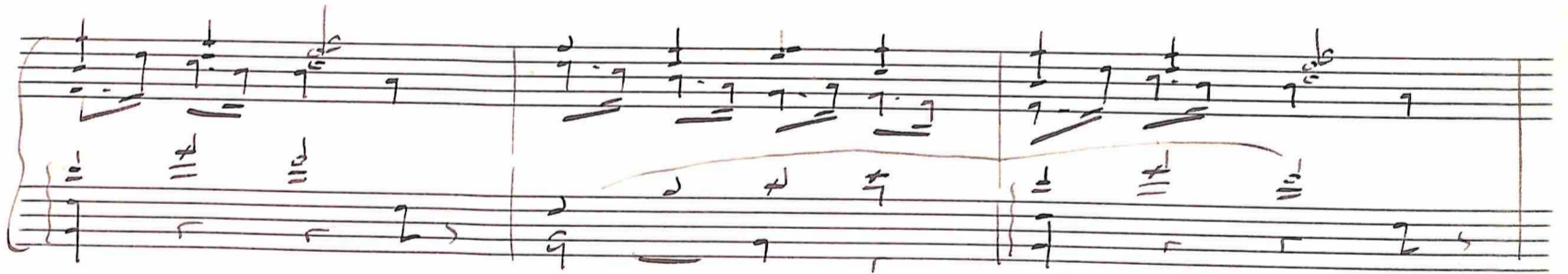
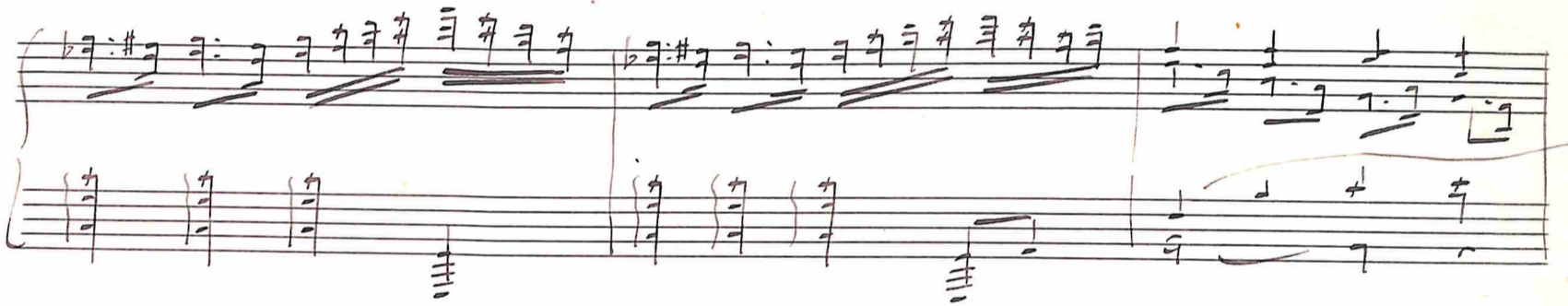
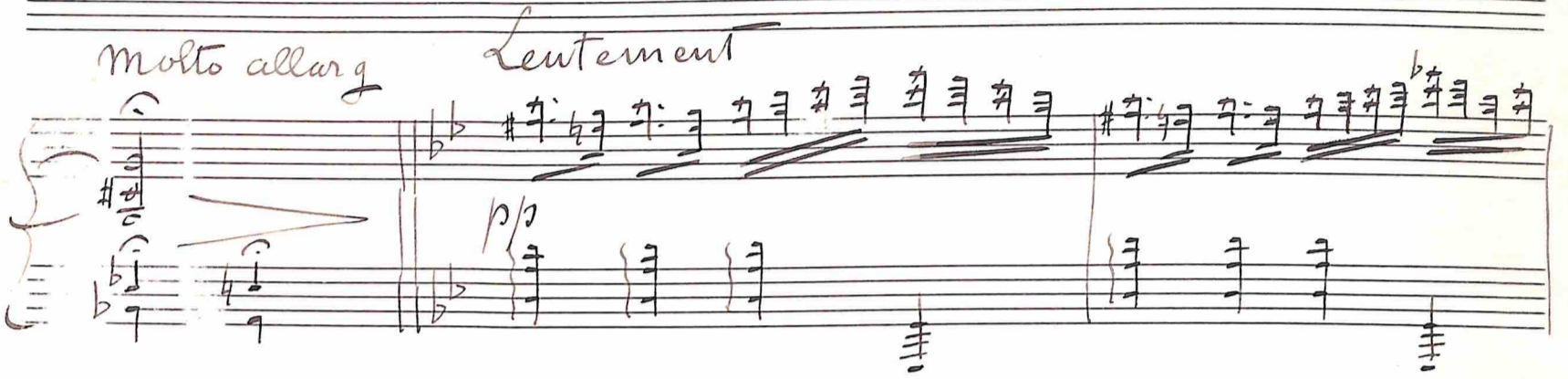
Handwritten musical notation for the fifth system, consisting of a treble staff and a bass staff. The treble staff contains notes and rests, with a dynamic marking of *ff* (fortissimo) written above the second measure. The bass staff contains notes and rests. The system concludes with a double bar line.

rall

Quin



molto allarg *Leutement*



Handwritten musical notation for the first system, consisting of a treble staff and a bass staff. The treble staff contains a melodic line with various notes and accidentals, including a sharp sign and a flat sign. The bass staff contains a bass line with notes and rests. A long horizontal line above the treble staff spans across the first two measures.

Handwritten musical notation for the second system, consisting of a treble staff and a bass staff. The treble staff continues the melodic line with notes and accidentals. The bass staff continues the bass line. A long horizontal line above the treble staff spans across the first two measures.

Handwritten musical notation for the third system, consisting of a treble staff and a bass staff. The treble staff contains notes and rests. The bass staff contains notes and rests. Below the bass staff, there are four vertical symbols that look like stylized clefs or rests.

Handwritten musical notation for the fourth system, consisting of a treble staff and a bass staff. The treble staff contains complex rhythmic patterns with many notes. The bass staff contains notes and rests. There are two vertical symbols below the bass staff.

Handwritten musical notation for the fifth system, consisting of a treble staff and a bass staff. The treble staff contains notes and rests. The bass staff contains notes and rests. The instruction "all molto" is written in cursive above the treble staff. The system ends with a double bar line.

Two empty musical staves at the bottom of the page.

Handwritten musical notation on a grand staff. The top staff uses a treble clef and the bottom staff uses a bass clef. The music is written in a key signature of one flat (B-flat) and a 4/4 time signature. The notation includes various notes, rests, and accidentals. There are some handwritten annotations above the staff, including a sharp sign and a circled note. The piece concludes with a double bar line and a final flourish.

A series of ten empty musical staves, each consisting of five horizontal lines, provided for further musical notation.