

Nocturne

pour

violon, <sup>2</sup>violoncelle <sup>1</sup>alto et harpe

ou piano

Mel. Berlioz

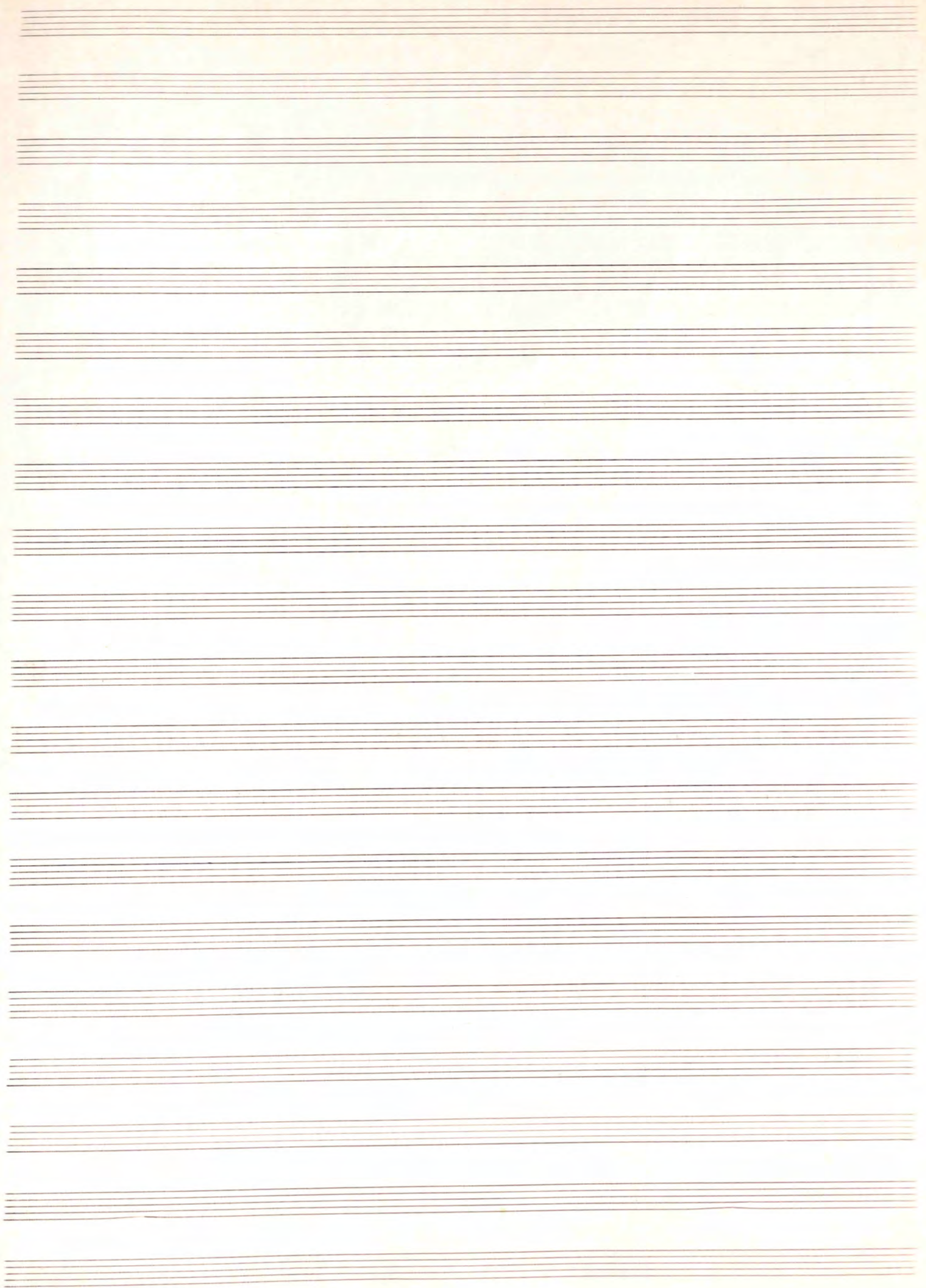
Morceau pour  
hautbois ou violone. et harpe chromatique

M. Bonis

4892

(au temps où elle ne se prenait pas au sérieux)

ne pas publier



*Adagio*

SOCIÉTÉ DES AUTEURS.  
COMPOSITEURS & ÉDITEURS DE MUSIQUE  
18 MAR 1946 606989  
40, Rue Chapelle, PARIS-9<sup>e</sup>

*haut bois*

*cor en fa*

*violoncelle*

*harpe*

*Adagio*

*p*

*8<sup>o</sup>*

*simile*

The image shows a handwritten musical score on aged paper. At the top, there is a library stamp from the 'SOCIÉTÉ DES AUTEURS. COMPOSITEURS & ÉDITEURS DE MUSIQUE' dated '18 MAR 1946' with the number '606989' and the address '40, Rue Chapelle, PARIS-9<sup>e</sup>'. The score is written in ink and includes several systems of music. The first system is for woodwinds and harp, with parts for 'haut bois', 'cor en fa', 'violoncelle', and 'harpe'. The tempo is marked 'Adagio' and the dynamics include 'p'. The second system continues the woodwind and harp parts. The third system also continues these parts. The harp part has a section marked '8<sup>o</sup>' and 'simile'. The notation includes various musical symbols such as clefs, notes, rests, and dynamic markings.

Handwritten musical score for the first system. It consists of five staves. The top three staves are for vocal parts (Soprano, Alto, and Tenor/Bass), and the bottom two are for piano accompaniment. The music is in a key with one flat (B-flat major or D minor) and a common time signature. The first measure of the vocal parts has a dynamic marking of *me.* (mezzo-forte). The second measure has *me.* and *usc.* (ritardando). The third measure has *usc.*. The fourth measure has *usc.*. The fifth measure has *dim.* (diminuendo). The piano accompaniment features a steady eighth-note pattern in the right hand and a bass line in the left hand.

Handwritten musical score for the second system, consisting of five staves. The top three staves are for vocal parts, and the bottom two are for piano accompaniment. The key signature remains one flat. The first measure of the vocal parts has a dynamic marking of *p* (piano). The second measure has *p*. The third measure has *p*. The fourth measure has *p*. The fifth measure has *p*. The piano accompaniment continues with a steady eighth-note pattern in the right hand and a bass line in the left hand.

Handwritten musical score for the third system, consisting of five staves. The top three staves are for vocal parts, and the bottom two are for piano accompaniment. The key signature remains one flat. The first measure of the vocal parts has a dynamic marking of *p*. The second measure has *p*. The third measure has *p*. The fourth measure has *p*. The fifth measure has *p*. The piano accompaniment continues with a steady eighth-note pattern in the right hand and a bass line in the left hand.

Handwritten musical score for the first system. It consists of four staves. The top two staves are vocal lines, and the bottom two are piano accompaniment. The key signature changes from one flat to one sharp, and then to two sharps. The piano part includes complex chord structures and arpeggiated figures.

Handwritten musical score for the second system. It continues the vocal and piano parts from the first system. The piano accompaniment features a prominent, rhythmic pattern in the right hand, possibly a harp or lute accompaniment style. The vocal lines continue with melodic phrases.

Handwritten musical score for the third system, which includes lyrics. The lyrics are: "u - - - sun - - - do". The system includes dynamic markings such as *mf* and *f*. The piano accompaniment continues with complex chordal textures. The vocal lines are clearly marked with the lyrics.

Handwritten musical score, first system. It consists of two systems of staves. The upper system has three staves: the top staff is in treble clef with a key signature of three flats and a dynamic marking of *dim*; the middle staff is in bass clef; and the bottom staff is in bass clef with a key signature of one flat. The lower system has two staves: the top staff is in treble clef with a key signature of three flats and a dynamic marking of *dim*; the bottom staff is in bass clef with a key signature of one flat. The music features various notes, rests, and slurs.

Handwritten musical score, second system. It consists of two systems of staves. The upper system has three staves: the top staff is in treble clef; the middle staff is in bass clef; and the bottom staff is in bass clef. The lower system has two staves: the top staff is in treble clef; the bottom staff is in bass clef. The music continues with complex rhythmic patterns and slurs.

Handwritten musical score, third system. It consists of two systems of staves. The upper system has three staves: the top staff is in treble clef; the middle staff is in bass clef; and the bottom staff is in bass clef. The lower system has two staves: the top staff is in treble clef; the bottom staff is in bass clef. The music concludes with various notes and rests.

Handwritten musical score system 1. It consists of four staves. The top two staves are for a vocal line, with a treble clef on the first and a bass clef on the second. The bottom two staves are for piano accompaniment, with a treble clef on the third and a bass clef on the fourth. The music is in a key with one flat (B-flat) and a common time signature. The first staff has a long melodic line with a slur. The second staff has a similar line. The third staff has a rhythmic accompaniment with eighth notes and chords. The fourth staff has a bass line with chords and rests.

Handwritten musical score system 2. It consists of four staves. The top two staves are for a vocal line, with a treble clef on the first and a bass clef on the second. The bottom two staves are for piano accompaniment, with a treble clef on the third and a bass clef on the fourth. The music is in a key with one flat (B-flat) and a common time signature. The first staff has a melodic line with a slur. The second staff has a similar line. The third staff has a rhythmic accompaniment with eighth notes and chords. The fourth staff has a bass line with chords and rests.

Handwritten musical score system 3. It consists of four staves. The top two staves are for a vocal line, with a treble clef on the first and a bass clef on the second. The bottom two staves are for piano accompaniment, with a treble clef on the third and a bass clef on the fourth. The music is in a key with one flat (B-flat) and a common time signature. The first staff has a melodic line with a slur. The second staff has a similar line. The third staff has a rhythmic accompaniment with eighth notes and chords. The fourth staff has a bass line with chords and rests.



Handwritten musical score for the first system. It consists of five staves. The top three staves are for vocal parts (Soprano, Alto, and Tenor/Bass), and the bottom two are for piano accompaniment. The music is in a key with one flat (B-flat) and a common time signature. The first staff has a treble clef, the second and third have alto and bass clefs respectively. The piano part uses a grand staff with treble and bass clefs. The score is divided into four measures by vertical bar lines. The first measure shows a whole note chord in the vocal parts and a piano accompaniment starting with a series of eighth notes. The second and third measures feature melodic lines in the vocal parts and corresponding piano accompaniment. The fourth measure concludes the system with a final chord and a fermata over the vocal notes.

Handwritten musical score for the second system, consisting of three staves. The top two staves are for vocal parts and the bottom one is for piano accompaniment. The music continues from the first system. The first measure shows a whole note chord. The second measure is mostly empty, with some faint markings. The third measure shows a melodic line in the vocal parts and piano accompaniment. The system concludes with a signature and the date "1999".

*B. Benoit*  
1999

SOCIÉTÉ DES AUTEURS,  
COMPOSITEURS & ÉDITEURS DE MUSIQUE  
18 MAR 1946 606989  
10, rue de Valenciennes, PARIS-10

Nocturne

Adagio

*p*

8°

*pp* 2 ped.

*cresc.*

8°

*cresc.*

*dim*

*dim*

8°

*sempre staccato*

Handwritten musical score, first system. It consists of five staves. The top two staves are for vocal parts, and the bottom three are for piano accompaniment. The key signature has one flat (Bb). The first measure is a whole rest. The second measure is marked *con espress*. The third measure is marked *con*. The piano accompaniment features a series of chords in the right hand and a melodic line in the left hand.

Handwritten musical score, second system. It consists of five staves. The top two staves are for vocal parts, and the bottom three are for piano accompaniment. The key signature has one flat (Bb). The first measure is marked *con espress* and has a red box containing the letter 'A'. The second measure is marked *vp*. The third measure is marked *con clef de fa*. The piano accompaniment features a series of chords in the right hand and a melodic line in the left hand.

Handwritten musical score, third system. It consists of five staves. The top two staves are for vocal parts, and the bottom three are for piano accompaniment. The key signature has one flat (Bb). The first measure is marked *mp*. The second measure is marked *dim*. The third measure is marked *dim*. The fourth measure is marked *dim*. The piano accompaniment features a series of chords in the right hand and a melodic line in the left hand.

*dolce*

Handwritten musical score for the first system. It consists of four staves. The top staff is a vocal line with notes and rests. The second staff is another vocal line with notes and rests. The third staff is a piano accompaniment line with notes and rests, including a circled section with the annotation "en def. de fa". The bottom staff is a piano accompaniment line with notes and rests, including a circled section with the annotation "8°".

*resc.*

Handwritten musical score for the second system. It consists of four staves. The top staff is a vocal line with notes and rests. The second staff is another vocal line with notes and rests. The third staff is a piano accompaniment line with notes and rests, including a circled section with the annotation "8°". The bottom staff is a piano accompaniment line with notes and rests, including a circled section with the annotation "resc."

**B**

Handwritten musical score for the third system. It consists of four staves. The top staff is a vocal line with notes and rests. The second staff is another vocal line with notes and rests. The third staff is a piano accompaniment line with notes and rests, including a circled section with the annotation "8°". The bottom staff is a piano accompaniment line with notes and rests, including a circled section with the annotation "8°". A red box containing the letter "B" is located in the upper right corner of the system.

*mf<sup>1</sup> espress*

Handwritten musical score for the first system. It consists of five staves. The top two staves are vocal lines with lyrics "re - -" and "re". The bottom three staves are piano accompaniment. The music is in a key with one flat (B-flat) and a common time signature. The notation includes various note values, rests, and dynamic markings.

Handwritten musical score for the second system. It consists of five staves. The top two staves are vocal lines with lyrics "seen - -", "do", and "dim.". The bottom three staves are piano accompaniment. The music is in a key with one flat (B-flat) and a common time signature. The notation includes various note values, rests, and dynamic markings.

Handwritten musical score for the third system. It consists of five staves. The top two staves are vocal lines. The bottom three staves are piano accompaniment. The first two staves of the piano part are crossed out with a large 'X'. The music is in a key with one flat (B-flat) and a common time signature. The notation includes various note values, rests, and dynamic markings.

*cresc.*  
*cresc.*  
*cresc.*  
*dim*  
*dim*  
*dim*  
*cresc.*  
*sempre staccato*  
*dim*

The first system of the handwritten musical score consists of five staves. The top staff is in G major and contains a melodic line with a *cresc.* marking above it. The second staff is in F major and contains a melodic line with a *cresc.* marking above it. The third staff is in G major and contains a melodic line with a *cresc.* marking above it. The fourth staff is in G major and contains a melodic line with a *dim* marking above it. The fifth staff is in G major and contains a melodic line with a *dim* marking above it. There are also some markings like *sempre staccato* and *dim* in the lower staves.

*con espress*  
*ritornella*  
*30*

The second system of the handwritten musical score consists of five staves. The top staff is in G major and contains a melodic line. The second staff is in F major and contains a melodic line with a *con espress* marking above it. The third staff is in G major and contains a melodic line. The fourth staff is in G major and contains a melodic line with a *ritornella* marking above it. The fifth staff is in G major and contains a melodic line with a *30* marking above it.

*alto*

The third system of the handwritten musical score consists of five staves. The top staff is in G major and contains a melodic line. The second staff is in F major and contains a melodic line with an *alto* marking above it. The third staff is in G major and contains a melodic line. The fourth staff is in G major and contains a melodic line. The fifth staff is in G major and contains a melodic line.

con calore

Handwritten musical score for the first system. It consists of five staves. The top staff is a vocal line with lyrics "ve - - -". The second and third staves are vocal lines with lyrics "ve - - -" and "ve - - -". The fourth and fifth staves are piano accompaniment. The music is in a key with one flat (B-flat) and a common time signature. The tempo/mood is indicated as "con calore".

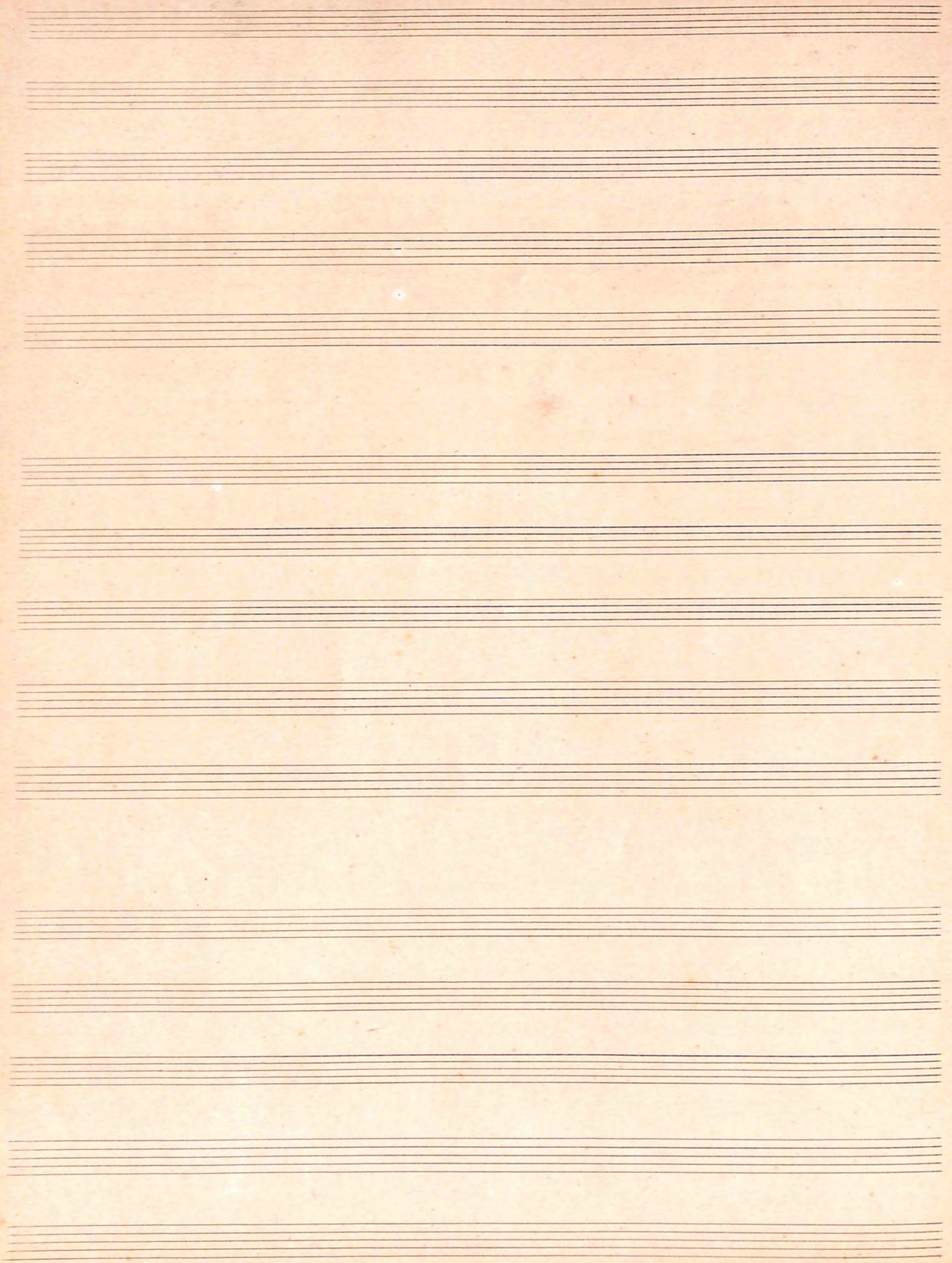
Handwritten musical score for the second system. It consists of five staves. The top three staves are vocal lines. The bottom two staves are piano accompaniment. The music continues from the first system. There are some markings like "80" and "mg" in the piano part.

Handwritten musical score for the third system. It consists of five staves. The top two staves are vocal lines. The bottom three staves are piano accompaniment. The music includes performance instructions such as "pizz." (pizzicato) and "Arco" (arco). The piano part features a sequence of notes in the upper register.

Handwritten musical score for the first system. It consists of four staves. The top two staves are vocal lines. The bottom two staves are piano accompaniment. The first measure shows a vocal line with a quarter note and a half note, and piano accompaniment with a bass line and chords. The second measure continues the vocal line and piano accompaniment. The third measure has a vocal line with a quarter note and a half note, and piano accompaniment with a bass line and chords. The fourth measure has a vocal line with a quarter note and a half note, and piano accompaniment with a bass line and chords. The word "pauze" is written above the piano accompaniment in the fourth measure.

Handwritten musical score for the second system. It consists of four staves. The top two staves are vocal lines. The bottom two staves are piano accompaniment. The first measure shows a vocal line with a quarter note and a half note, and piano accompaniment with a bass line and chords. The second measure continues the vocal line and piano accompaniment. The third measure has a vocal line with a quarter note and a half note, and piano accompaniment with a bass line and chords. The fourth measure has a vocal line with a quarter note and a half note, and piano accompaniment with a bass line and chords. The word "Pizz" is written above the vocal line in the second measure. The word "pp" is written below the vocal line in the second measure. The word "Pizz" is written above the piano accompaniment in the second measure. The word "Arco" is written above the piano accompaniment in the second measure. The word "Pizz" is written above the piano accompaniment in the third measure. The word "Arco" is written above the piano accompaniment in the third measure. The word "Pizz" is written above the piano accompaniment in the fourth measure. The word "Arco" is written above the piano accompaniment in the fourth measure.



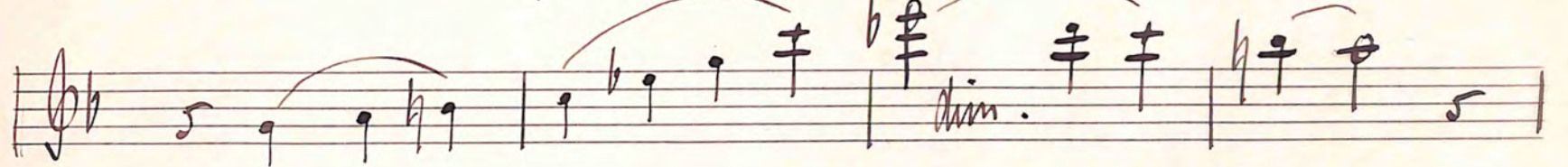
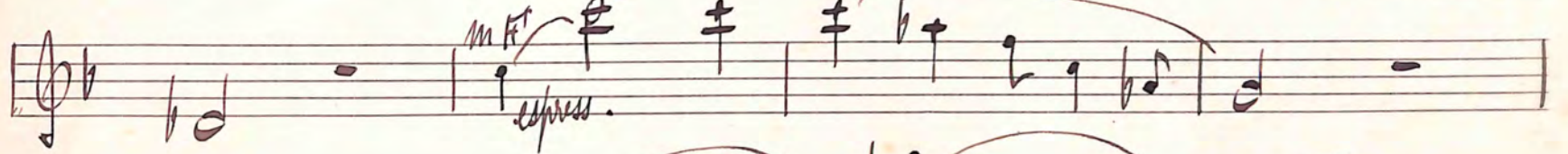
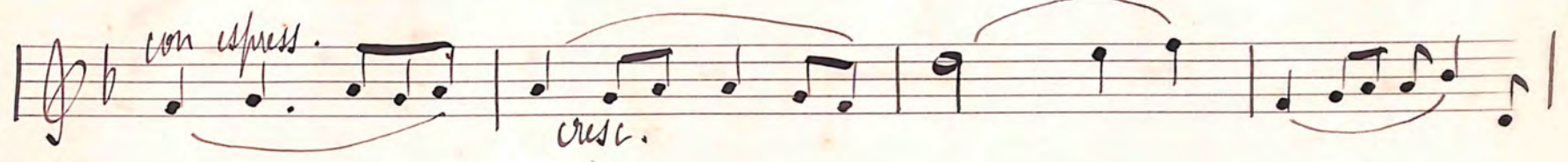


Nocturne Adagio

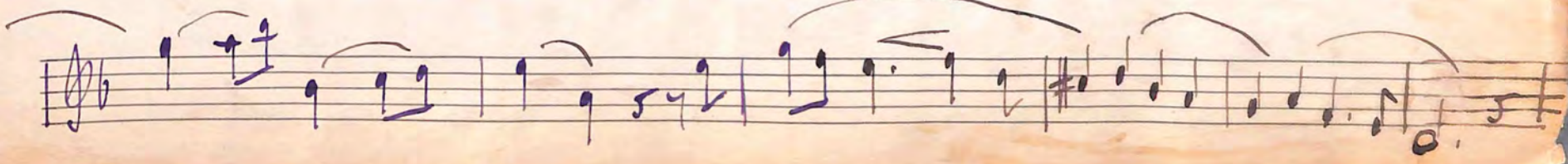
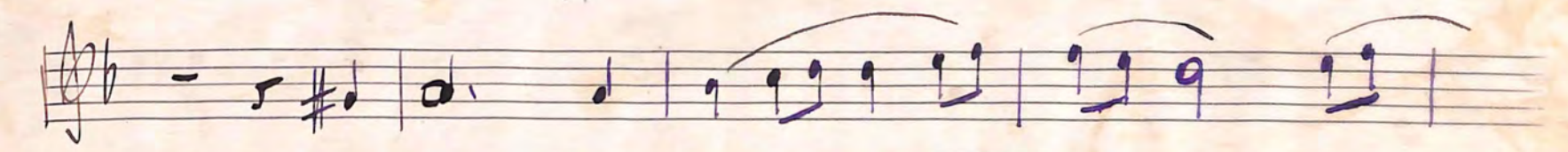
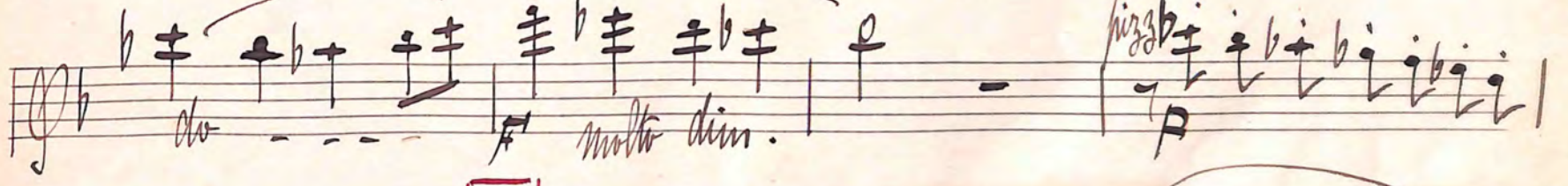
COMPOSITEURS & EDITEURS DE MUSIQUE  
- 3 JAN 1946 605076  
10, RUE CHATELAIN, PARIS-2



A



B



Handwritten musical score on a page with five staves. The first staff begins with a treble clef, a key signature of one flat (B-flat), and a time signature of 5/4. A red box containing the letter 'D' is written above the first measure. The melody consists of quarter and eighth notes, with a fermata over the final measure. The lyrics 'con calore' and 'cre' are written below the notes. The second staff continues the melody with a fermata over the first measure, followed by quarter and eighth notes. The lyrics 'scen' and 'do' are written below. The third staff features a treble clef, a key signature of one flat, and a dynamic marking of *p*. It includes a fermata over the first measure, followed by quarter and eighth notes. The lyrics 'pizz' and 'p' are written below. The fourth staff begins with a treble clef, a key signature of one flat, and a time signature of 4/4. A red box containing the letter 'E' is written above the first measure. The melody consists of quarter and eighth notes, with a fermata over the final measure. The lyrics 'p a piacere dim' are written below. The fifth staff continues the melody with a fermata over the first measure, followed by quarter and eighth notes. The lyrics 'pp' and '2' are written below. The page contains several empty staves at the bottom.

alto



Notturno Adagio

Handwritten musical notation on a five-line staff. The key signature has one flat (B-flat) and the time signature is 2/4. The music begins with a whole note followed by a series of eighth notes. A *cresc.* marking is present at the end of the line.

Handwritten musical notation on a five-line staff. The music continues with eighth notes and quarter notes. A *dim.* marking is present.

Handwritten musical notation on a five-line staff. The music features a series of eighth notes. A *con espress.* marking is present.

Handwritten musical notation on a five-line staff. A red box labeled 'A' is placed over a note. The music includes a *cresc.* marking and ends with a section of the staff that is crossed out with diagonal lines.

Handwritten musical notation on a five-line staff. The music includes a *mf* dynamic marking and a *con espress.* marking.

Handwritten musical notation on a five-line staff. The music includes a *cresc.* marking.

Handwritten musical notation on a five-line staff. A red box labeled 'B' is placed over a note. The music includes a *dim* marking and a *pp* dynamic marking.

Handwritten musical notation on a five-line staff. The music includes a *mf* dynamic marking.

Handwritten musical notation on a five-line staff. The music includes the lyrics "cre - - - scen - - - do" and a *molto dim* marking.

Handwritten musical notation on a five-line staff. The music includes a *pizz.* marking and a red box labeled 'C'.

Handwritten musical notation on a five-line staff. A red box labeled 'D' is placed over a note. The music includes a *cresc.* marking.

Handwritten musical notation on a five-line staff. The music includes a *mf* dynamic marking and a red box labeled 'E'.

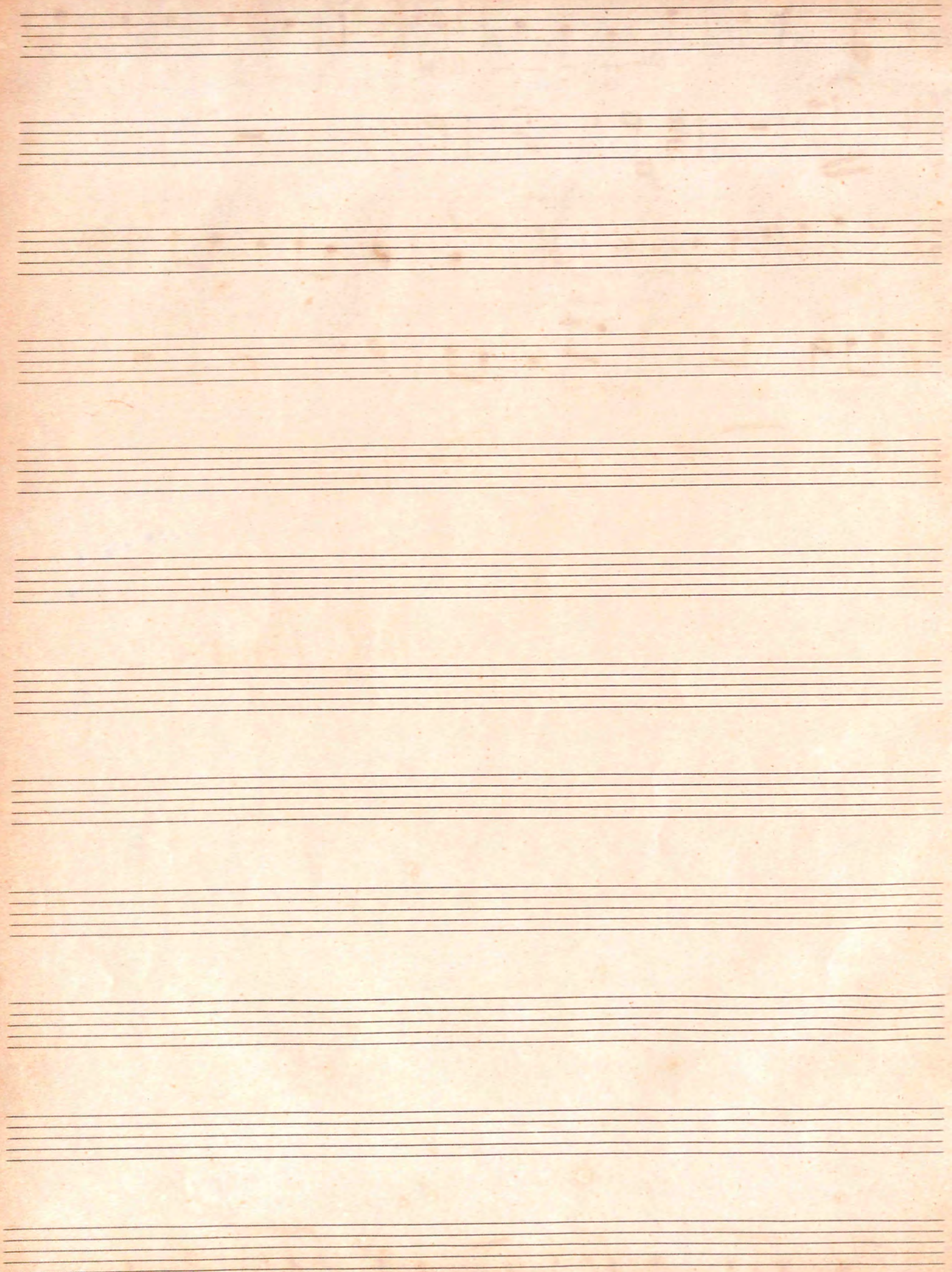
Handwritten musical score with lyrics: *cre - - - - - seen - - - - - do*

Annotations include: *pp*, *arco con espress.*, *pizz*, *pp*, *pp*, *rit*, *2*, and a red box containing the letter **A**.

SOCIÉTÉ DES AUTEURS,  
COMPOSITEURS & EDITEURS DE MUSIQUE  
- 3 JAN 1946 605076  
12, RUE CASSEGLON, PARIS-8<sup>e</sup>

Mel. Bonis

Handwritten musical notation on a single staff, featuring a red box containing the letter **D** and the number *80*.

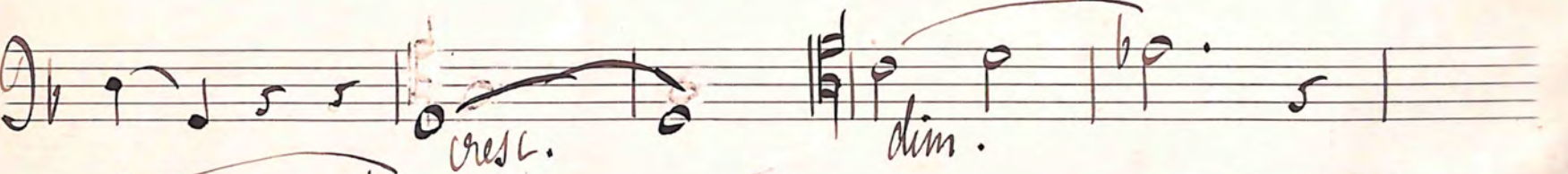
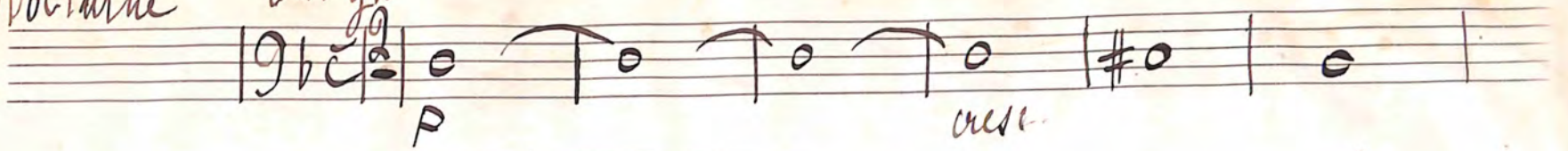


*Violoncelle*

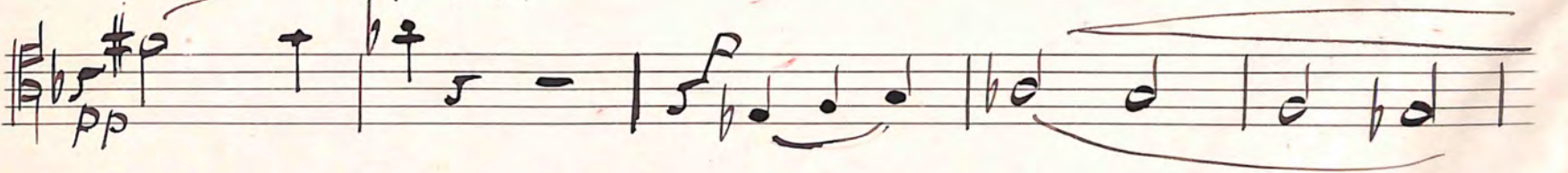
Violoncelle



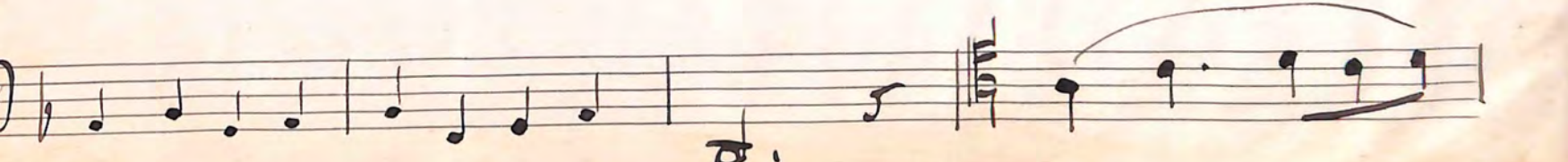
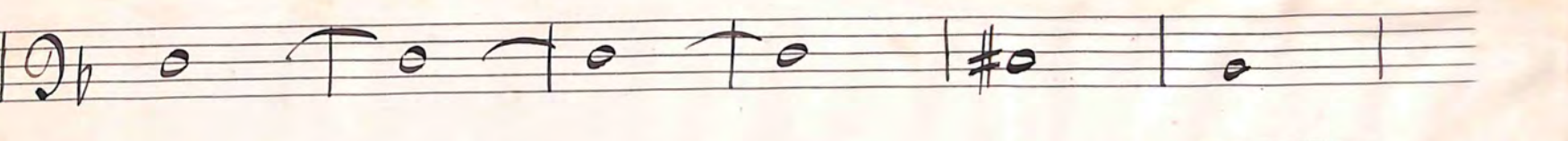
Nocturne Adagio



**B**



**C**



**D**

**E**

Mod-Boris

