

Ariel

B. Rouillon

Leveillé

Vif, léger $\text{♩} = 138$

Arioso

moderato

no 8

main droite dessus

resc.

ped

resc.

resc.

a tempo

resc.

soyez

a tempo

mp

no resc.

pp

Handwritten musical score, first system. It consists of four staves. The top two staves are in treble clef with a key signature of two sharps (F# and C#). The bottom two staves are in bass clef. The music features various rhythmic values, including eighth and sixteenth notes, and rests. Dynamic markings include *mf* and *pp*. There are some corrections and scribbles in the notation.

Handwritten musical score, second system. It consists of two staves. The top staff is in treble clef and the bottom staff is in bass clef. The music is marked *mf* and includes the instruction *ad compo*. There is a section of the music that is heavily scribbled over with the word *rit* written in red. The system ends with a double bar line.

Handwritten musical score, third system. It consists of two staves. The top staff is in treble clef and the bottom staff is in bass clef. The music is marked *mf* and includes the instruction *ad compo*. There are several measures of music with some corrections and scribbles.

Handwritten musical score, fourth system. It consists of two staves. The top staff is in treble clef and the bottom staff is in bass clef. The music is marked *mf* and includes the instruction *ad compo*. There are several measures of music with some corrections and scribbles.

Handwritten musical score, fifth system. It consists of two staves. The top staff is in treble clef and the bottom staff is in bass clef. The music is marked *mf* and includes the instruction *ad compo*. There are several measures of music with some corrections and scribbles.

Adagio 10

Handwritten musical notation for the first system, consisting of two staves. The notation includes notes, rests, and dynamic markings such as 'p' and 'f'. The right side of the system is heavily crossed out with multiple diagonal lines.

Handwritten musical notation for the second system, consisting of two staves. It features a 'cresc.' marking and a 'dim.' marking. The right side of the system is crossed out with diagonal lines.

Handwritten musical notation for the third system, consisting of two staves. The notation includes notes, rests, and dynamic markings such as 'p' and 'f'.

Handwritten musical notation for the fourth system, consisting of two staves. It includes a 'cresc.' marking and a 'dim.' marking. The right side of the system is crossed out with diagonal lines.

*Mr. Noel Barnes
1925*

Five empty musical staves at the bottom of the page.

Ariel

pièce for piano

Abel Bonis

1925.

Bourwillon

Andel $\frac{2}{4}$ *mf* *l'èger* $\text{♩} = 144$ *Mores* *de* *noires* *Red*

80 *p* *cresc.*

Mores *cresc.*

a tempo *p* *stretto*

a tempo *ce dez* *a tempo* *mp*

pp

Handwritten musical notation, first system. Treble and bass staves. Includes dynamic markings *mf* and *pp*.

Handwritten musical notation, second system. Treble and bass staves. Includes dynamic marking *pp*.

Handwritten musical notation, third system. Treble and bass staves. Includes dynamic marking *mf* and tempo marking *plus lent*. A section is crossed out with a large 'X' and labeled *plus lent*.

Handwritten musical notation, fourth system. Treble and bass staves. Includes tempo marking *Tempo 12* and dynamic marking *p*. A circled section at the end is labeled *(noires)*.

Handwritten musical notation, fifth system. Treble and bass staves. Includes dynamic marking *cresc.*

Handwritten musical notation, sixth system. Treble and bass staves. Includes dynamic marking *p* and tempo marking *plus lent*.

Tempo 10

Mel. Boris

1925

Ariel

Pièce pour piano

Moelias Monisouffsky

Dec. 1925

Mel Bonis

avant dernières notes

Vif. léger. ♩ = 144

Handwritten musical notation for the first system. It consists of two staves. The top staff is in treble clef and the bottom in bass clef. The key signature has two sharps (F# and C#). The time signature is 2/4. The notation includes various note values, rests, and dynamic markings such as *mf* and *cresc.*.

Handwritten musical notation for the second system. It consists of two staves. The top staff is in treble clef and the bottom in bass clef. The key signature has two sharps. The notation includes notes, rests, and dynamic markings such as *p* and *cresc.*.

Handwritten musical notation for the third system. It consists of two staves. The top staff is in treble clef and the bottom in bass clef. The key signature has two sharps. The notation includes notes, rests, and dynamic markings such as *p* and *cresc.*.

Handwritten musical notation for the fourth system. It consists of two staves. The top staff is in treble clef and the bottom in bass clef. The key signature has two sharps. The notation includes notes, rests, and dynamic markings such as *p stretto* and *a Tempo*.

Handwritten musical notation for the fifth system. It consists of two staves. The top staff is in treble clef and the bottom in bass clef. The key signature has two sharps. The notation includes notes, rests, and dynamic markings such as *mp*.

Handwritten musical notation for the sixth system. It consists of two staves. The top staff is in treble clef and the bottom in bass clef. The key signature has two sharps. The notation includes notes, rests, and dynamic markings such as *pov cresc.* and *pp*.

Handwritten musical notation, first system. It consists of two staves. The upper staff has a treble clef and a key signature of two sharps (F# and C#). The lower staff has a bass clef. The music includes various note values, rests, and dynamic markings such as *mf* and *pp*. There are also some handwritten annotations in the upper staff.

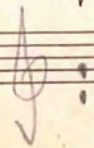
Handwritten musical notation, second system. It consists of two staves. The upper staff has a treble clef and a key signature of two sharps. The lower staff has a bass clef. The music features complex rhythmic patterns and dynamic markings.

Handwritten musical notation, third system. It consists of two staves. The upper staff has a treble clef and a key signature of two sharps. The lower staff has a bass clef. The music includes dynamic markings such as *mp* and *rit*. There are also handwritten annotations: *a Tempo* and *Plus lent*.

Handwritten musical notation, fourth system. It consists of two staves. The upper staff has a treble clef and a key signature of two sharps. The lower staff has a bass clef. The music includes various note values and rests.

Handwritten musical notation, fifth system. It consists of two staves. The upper staff has a treble clef and a key signature of two sharps. The lower staff has a bass clef. The music includes various note values and rests.

Handwritten musical notation, sixth system. It consists of two staves. The upper staff has a treble clef and a key signature of two sharps. The lower staff has a bass clef. The music includes dynamic markings such as *all.* and various note values.



Plus lent

Handwritten musical notation for the first system, consisting of a treble staff and a bass staff. The treble staff contains a series of eighth and sixteenth notes, some with slurs. The bass staff contains chords and single notes. A dynamic marking 'cresc.' is written above the bass staff.

Tempo 10

Handwritten musical notation for the second system, consisting of a treble staff and a bass staff. The treble staff features chords and some melodic lines. The bass staff contains a series of notes with stems pointing downwards.

Handwritten musical notation for the third system, consisting of a treble staff and a bass staff. The treble staff contains a complex melodic line with many notes and slurs. The bass staff contains a series of notes with stems pointing downwards.

Handwritten musical notation for the fourth system, consisting of a treble staff and a bass staff. The treble staff contains chords and some melodic lines. The bass staff contains a series of notes with stems pointing downwards. A dynamic marking 'cresc.' is written above the treble staff.

Melias Borissouffsky

Borissouffsky ad

part des partitions

Ne pas publier

à Editer

~~A ma fille Antoinette Louis-Fleury~~

à publier

~~Ariel~~

Ghergo ~~Rica~~ pour piano

Mel Morris

1998

~~Je n'ai jamais aimé le bien~~

~~mais je n'ai jamais aimé la musique~~

SOCIÉTÉ DES AUTEURS
COMPOSITEURS RÉVISEURS DE MUSIQUE
- 3 JAN 1946
10, Rue Chapelle, PARIS-9^e
605069

Vif, léger = 120
= $\sharp\sharp$

Handwritten musical notation for the first system, featuring a grand staff with treble and bass clefs. The music is in D major and 2/4 time. It includes various note values, rests, and dynamic markings like 'mp' and 'p'. A large slur covers the first five measures. The piece ends with a 'Ped x' marking.

Handwritten musical notation for the second system, continuing the piece. It features a grand staff with treble and bass clefs. The music includes dynamic markings 'p' and 'mf', and a 'cresc.' marking. The system concludes with a 'mf' dynamic.

Handwritten musical notation for the third system, continuing the piece. It features a grand staff with treble and bass clefs. The music is marked 'p' and includes a 'leggero' marking in blue ink. The system ends with a 'p' dynamic.

Handwritten musical notation for the fourth system, continuing the piece. It features a grand staff with treble and bass clefs. The music includes dynamic markings 'p' and 'rit.', and a 'a tempo' marking. The system ends with a 'Ped x' marking.

Handwritten musical notation for the fifth system, featuring vocal lines and piano accompaniment. The vocal line has lyrics "ni - to - - - - - to - - - - -". The piano part includes dynamic markings "poco più lento", "dolce cantabile", and "legato". The system ends with a "con Ped." marking.

Handwritten musical score for piano, first system. The music is in G major (one sharp) and 4/4 time. It features a complex melodic line in the right hand with many accidentals and a steady bass line in the left hand. Pedal markings are present: Ped, x Ped, x Ped, x Ped, x Ped, x Ped, x Ped, x Ped, x. Dynamics include *pp* and *mp*. Tempo markings include *vivo* and *a tempo*.

Handwritten musical score for piano, second system. The music continues with similar melodic and harmonic patterns. Pedal markings are present: Ped, x Ped, x Ped, x Ped, x Ped, x Ped, x Ped, x Ped, x. Dynamics include *p*.

Handwritten musical score for piano, third system. The music continues with similar melodic and harmonic patterns. Pedal markings are present: Ped, x Ped, x Ped, x Ped, x Ped, x Ped, x Ped, x Ped, x. Dynamics include *pp*, *mf*, and *p*. Tempo markings include *vivo* and *a tempo*.

Handwritten musical score for piano, fourth system. The music continues with similar melodic and harmonic patterns. Pedal markings are present: Ped, x Ped, x Ped, x Ped, x Ped, x Ped, x Ped, x Ped, x. Dynamics include *mf* and *rit*. Tempo markings include *Tempo 1^o* and *liqu*.

Handwritten musical score for piano, fifth system. The music continues with similar melodic and harmonic patterns. Pedal markings are present: Ped, x Ped, x Ped, x Ped, x Ped, x Ped, x Ped, x Ped, x. Dynamics include *rit* and *mf*. Tempo markings include *molto* and *a tempo*. The system ends with a double bar line and a final chord.

Handwritten musical score, first system. Treble and bass staves. Includes notes, rests, and dynamic markings. Pedal markings: Ped x.

Handwritten musical score, second system. Treble and bass staves. Includes notes, rests, and dynamic markings. Pedal markings: Ped x. *dim.* *20 4*

Handwritten musical score, third system. Treble and bass staves. Includes notes, rests, and dynamic markings. Pedal markings: Ped x. *rit.* *liger* *Tempo* *p*

Handwritten musical score, fourth system. Treble and bass staves. Includes notes, rests, and dynamic markings. Pedal markings: Ped x. *mf* *Poco* *lento*

Handwritten musical score, fifth system. Treble and bass staves. Includes notes, rests, and dynamic markings. Pedal markings: Ped x. *dim.* *Tempo* *p* *rit.* *oso*

stretto

vivo
viv.

80
Ped
Moel
Paris
1928

SOCIÉTÉ DES AUTEURS.
COMPOSITEURS & ÉCRIVAINS DE MUSIQUE
- 3 JAN 1946 605069
10, Rue Chaptal, PARIS-9^e

~~A ma fille Antoinette Louis-Fleury~~

Scherzo pour piano

Mel Bonis

Vif, léger ♩ = 120

Handwritten musical notation for the first system. It consists of two staves (treble and bass clef) in a key signature of two sharps (F# and C#). The time signature is 2/4. The music includes various note values, rests, and dynamic markings such as *mp*. A *Ped x* marking is present at the end of the system. Above the first staff, there are some handwritten annotations: *mp*, *f*, and a sequence of numbers: 2, 3, 4, 2, 1, 3, 1, 3.

Handwritten musical notation for the second system. It consists of two staves (treble and bass clef) in a key signature of two sharps. The music includes notes, rests, and dynamic markings such as *p* and *mecc.*. A *Ped* marking is present at the end of the system.

Handwritten musical notation for the third system. It consists of two staves (treble and bass clef) in a key signature of two sharps. The music includes notes, rests, and dynamic markings such as *p*. A *legger* marking is present at the end of the system.

Handwritten musical notation for the fourth system. It consists of two staves (treble and bass clef) in a key signature of two sharps. The music includes notes, rests, and dynamic markings such as *Ped* and *x*.

Handwritten musical notation for the fifth system. It consists of two staves (treble and bass clef) in a key signature of two sharps. The music includes notes, rests, and dynamic markings such as *rit*, *a tempo*, *Poco più lento*, and *Dolce cantabile*. A *legato* marking is present at the end of the system. The lyrics "ni - - - te - - - nu - - - to" are written above the notes.

Handwritten musical notation for the sixth system. It consists of two staves (treble and bass clef) in a key signature of two sharps. The music includes notes, rests, and dynamic markings such as *Ped* and *x*.

vivo
a tempo
pp mp
Ped x Ped x

This system contains two staves of handwritten musical notation. The top staff is in treble clef and the bottom in bass clef. The key signature has three sharps (F#, C#, G#). The music includes various note values, rests, and dynamic markings such as *pp* and *mp*. Pedal markings are indicated as *Ped x* under the bass staff. The tempo marking *vivo* is at the beginning, and *a tempo* appears later in the system.

This system continues the musical piece with two staves. It features a variety of note values and rests, maintaining the three-sharp key signature. The notation is dense with many beamed notes and rests.

p

This system consists of two staves of music. The top staff has a piano (*p*) dynamic marking. The music is characterized by complex rhythmic patterns and many beamed notes. The key signature remains three sharps.

vivo *a tempo* *vivo*
pp mf p

This system features two staves with tempo changes: *vivo*, *a tempo*, and *vivo*. Dynamic markings include *pp*, *mf*, and *p*. The notation includes various note values and rests, with some notes marked with 'x'.

mecc. *sit.*
8 2 3 5

This system contains two staves of music. It includes dynamic markings *mecc.* and *sit.*. There are also some numerical markings (8, 2, 3, 5) below the bass staff, possibly indicating fingerings or specific notes.

tempo 10 *liger* *Ben lento* *mais sonore*
Ped x Ped x Ped x Ped

This system features two staves with tempo and dynamic changes: *tempo 10*, *liger*, *Ben lento*, and *mais sonore*. The music concludes with four *Ped x* markings under the bass staff.

rit *a tempo*

p
Ped x

p
Ped x *Ped x* *Ped x*

p
Ped x *Ped x* *Ped x* *Ped x* *Ped x*

p *vivo* *cresc.* *Bemppo 10*

Poco lento *mf*
Ped x *Ped x* *Ped x* *Ped x*

Bemppo 10 *p*

Stretto

The first system of handwritten musical notation consists of two staves. The upper staff is in treble clef and the lower staff is in bass clef. Both staves are marked with a key signature of one sharp (F#). The music is written in a complex, rhythmic style with many beamed notes and accidentals. The word "Stretto" is written above the right side of the system.

vivo cresc.

The second system of handwritten musical notation consists of two staves. The upper staff is in treble clef and the lower staff is in bass clef. Both staves are marked with a key signature of one sharp (F#). The music is written in a complex, rhythmic style with many beamed notes and accidentals. The word "vivo cresc." is written above the left side of the system. The system ends with a fermata over a note in the upper staff and a final chord in the lower staff.

Moel Bonis